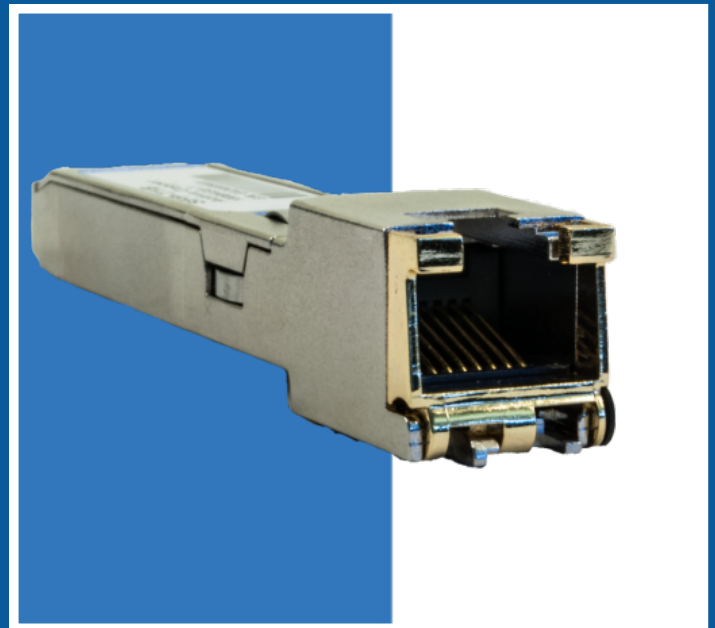


Ethernet over 2-tråds VDSL, up to 2km, pair of SFP module

FEATURES

- 2x SFP module for VDSL2 Sold as a pair of 2 SFP modules, 1x receiver & 1x transmitter
- Mounted in contacts with SFP slot
- RJ45 connector (for 2 wires)
- Up to 2 km, depending on the cable quality
- Temperature: -20°C to 75°C
- Power consumption of 3W from SFP port



SPECIFICATIONS

Andet	:	Sæt med 2 stik (CO+CPE)
LED	:	LED 1 (CO/ CPE indicator), LED 2 (PWR/ Link Status indicator)
Stik	:	RJ45
Strømforsyning	:	3.3V, 700mA (fra SFP)
Temperatur	:	-20°C to 75°C
Tilslutning	:	SFP
Range	:	Up to 2 km

